

Bengt-Göran Sköld:

# Till Betlehem

Juloratorium

Flöjt 1

# Juloratorium

## Ouvertyr

Bengt-Göran Sköld

Flute 1

$\text{♩} = 70-80$

7 2

$\text{♩} = 110$  *mf*

15 *tr*

Swing tempo 7

27 *tr*

30

33  $\text{♩} = 74$  3 3

43  $\text{♩} = 120$  3 7

57

63  $\text{♩} = 102$  3

71

75 *tr* 4

82 3

88

rit. . . . ♩=64

95

101

2

Bort med romerska vakten

Flute 1

58

63

Sats 3a "Det folk som vandrar..." Tacet

Sats 3b, "ty ett barn..." Tacet

Sats 3 c

Flute I

$\text{♩} = 67$

furs-te

12

3

3

27

3

10

Attacca

4

O, Herre, en gång var du nådig mot oss

Flute 1

$\text{♩} = 100$

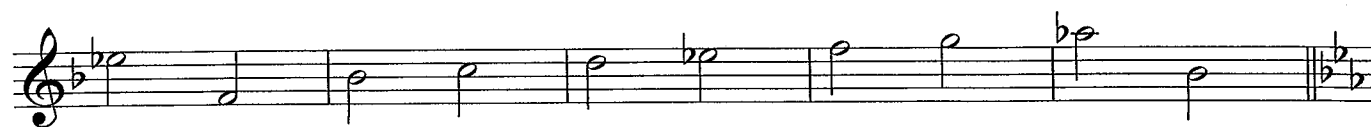
12

13

63

Flute I

The musical score for Flute I on page 5 is written in 4/4 time. It begins with a treble clef and a key signature of one sharp (F#). The first staff starts with a *ff* dynamic and features a trill (tr) over a dotted quarter note. The second staff continues with a melodic line and another trill. The third staff includes a trill and a first ending marked with the number 8. The fourth staff contains two first endings, one marked 11 and the other 6, followed by a second ending marked 7. The fifth staff begins with a first ending marked 8, followed by a second ending marked 4, and then a melodic passage starting with a *f* dynamic. The sixth and seventh staves continue the melodic development. The eighth staff concludes with a first ending marked 28 and a second ending marked 27, which includes a double bar line and a repeat sign.



**Sats 6 tacet**

Flute I 

8 

16 

24 

32 

40 

48 

55 

Sats 8 tacet

Lyssna till budet, Maria!

Flute I *f*

6

17

21

25

29

32

37

42

67



72

75

78

81

84

87

89

**10**

Lento, dolce

**Kom o Herre**

Flute **32**

**Sats 11 tacet**

# Del II

12

**Allegro**

*♩. = ca 108*

Flute 1

Flute I

32 33 *mf*

**Sats 14 och 15 tacet**

16

Flute I

36 *mf*

**Sats 17 tacet**

Flute I 



**Sats 19 Tacet**

Flute I

7 | 1. | 2. | 10

20

2 6  $\text{♩} = 80$  *f* 7

29

*f* 7 *f* 7

31

*tr* 7 3

35

39

43

Sats 21, 22 Tacet

