

Bengt-Göran Sköld:

Till Betlehem

Juloratorium

Klarinett 1

# Juloratorium

## Ouvertyr

Bengt-Göran Sköld

Clarinet I in B $\flat$   $\text{♩} = 70-80$

*mf*

14  $\text{♩} = 110$   
Swing tempo  
solo tr

21

26

31  $\text{♩} = 74$  3

39  $\text{♩} = 120$

48

53

60  $\text{♩} = 102$  4

71

75 6

83 3 rit. ♩=64

90

98 ff 3

102 3 Attaca

2

Clarinet 1 in Bb 2 2 4 4 19

33 2 1.

40 2. 3

Clarinet 1 in Bb

6/4 4/4 13 2/4 4 6

27

1. 2. 3

40

3

50

3 10 Attacca

Clarinet 1 in Bb

♩=100 4 4

8

13

18

15 32 8

75

79

Attacca

Clarinet 1 in B $\flat$

*ff*

6

4

16

Attacca

9

11

41

4

4

8

4

63

70

76

4

4

4

4

4

4

101

6

*mf* poco a poco crescendo

116

123

39

167



172



176



**Sats 6 tacet**

Clarinet 1 in B $\flat$

A musical staff for Clarinet 1 in B $\flat$  showing four measures of rests. Above the first measure is the number '11', and above the next three measures is the number '7'. The staff is in 3/4 time with a key signature of two sharps (F# and C#).

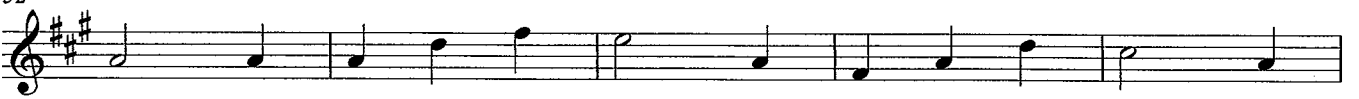
36



44



52



57



**Sats 8 tacet**

Clarinet 1 in B $\flat$

1 *f* 3

6 6

17

22

27

32 *ff* 3

38 *ff* 3

42 21 *ff* 3

67 *ff* 3

72 *ff* 3

77 *ff* 3

82 *ff* 3

87 *ff* 3

Lento, dolce

32

Clarinet 1 in B $\flat$



38



Sats 11 tacet



# Del II

Allegro

12

Clarinett 1 in Bb

5

19

36

# 13

Clarinet I in B $\flat$

71

78

84

Detailed description: This block contains the musical notation for measures 32 through 84 of a piece for Clarinet I in B-flat. The music is written on a single staff in treble clef with a key signature of three sharps (F#, C#, G#). The time signature changes from 4/4 to 2/4 at measure 32, then back to 4/4 at measure 33. Measure 32 is a whole rest. Measure 33 is a whole note. Measures 34-35 are a two-measure rest. Measures 36-84 contain a melodic line with various note values including quarter, eighth, and sixteenth notes, and rests. Measure 84 ends with a double bar line.

Sats 14, 15, 16,17, tacet

# 18

Clarinet I in B $\flat$

38

44

Detailed description: This block contains the musical notation for measures 32 through 44 of a piece for Clarinet I in B-flat. The music is written on a single staff in treble clef with a key signature of three sharps (F#, C#, G#). The time signature is 4/4. Measure 32 is a whole rest. Measure 33 is a whole note. Measures 34-35 are a two-measure rest. Measures 36-37 contain a triplet of eighth notes. Measures 38-44 contain a melodic line with various note values including quarter, eighth, and sixteenth notes, and rests. Measure 44 ends with a double bar line.

Sats 19 tacet

Clarinet 1 in Bb

7 1. 2. 13 6  $\text{♩} = 80$

29

*f* 7 3 3 3

34

39

43

Sats 21, 22 tacet

