

Bengt-Göran Sköld:

Till Betlehem

Juloratorium

Violin 1

Juloratorium

Ouvertyr

Bengt-Göran Sköld

$\text{♩} = 70-80$

Violin I

5

9

16

$\text{♩} = 110$
Swing tempo

28

33

39

44

$\text{♩} = 120$

49

54

58

62

66 $\text{♩} = 102$
4
10/8 9/8 11/8 9/8 11/8 10/8

74

77
4

84 rit. $\text{♩} = 64$
3
p

91 *cresc.*
mf f

98 ff

101

103 *Attacca*

Sats 2 tacet

Violin 1

Measures 1-62. Includes tempo marking $\text{♩} = 67$. Measure 14 includes first and second endings. Measures 35, 50, and 58 include triplet markings. The piece concludes with an **Attacca** instruction.

Sats 4 tacet

Vad är det som händer

Violin I *ff*

5

11

15 *loco* **Attacca**

21

57 *div.*

62

68

73

125



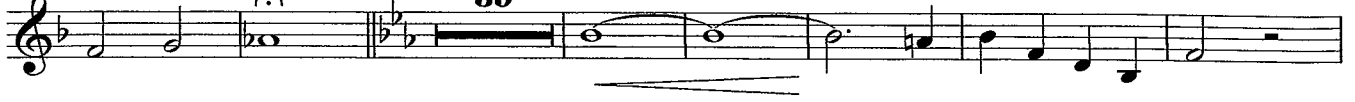
135 (8)

Sostenuto



143

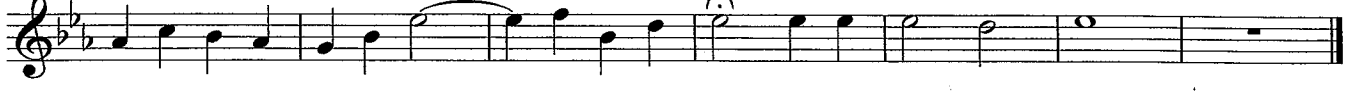
39



189



195



Sats 6 tacet

Violin 1

11 7 7 7

mp

37

44

52

mf

57

6 313

7

Sats 8 tacet

6 33

CD 8 ?

Violin I

6

11

16

27

30

34

39

43

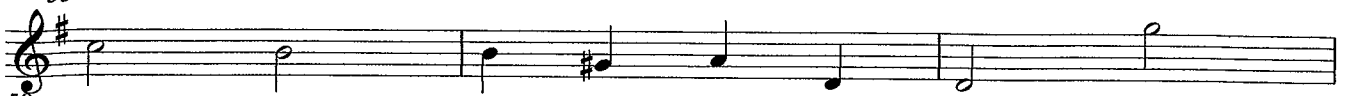
46

49

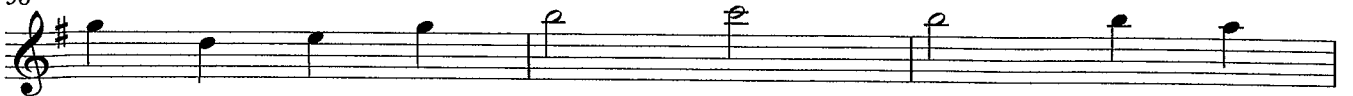
52



55



58



61



64



69



73



76



79



82



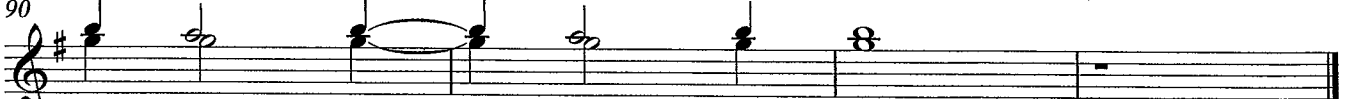
85



88



90



8 3:52

Lento, dolce

Violin I

32

37

40

Sats 11 tacet

Del II

Allegro

Violin I

1

4

7

10

Violin I

27

64

71

79

100 (8)

107 (8)

113 (8)

Sats 14, 15 tacet

Violin I

3 16

24

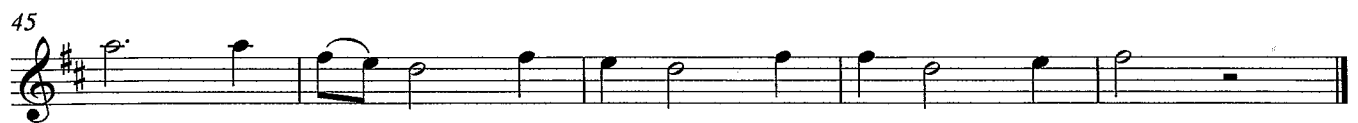
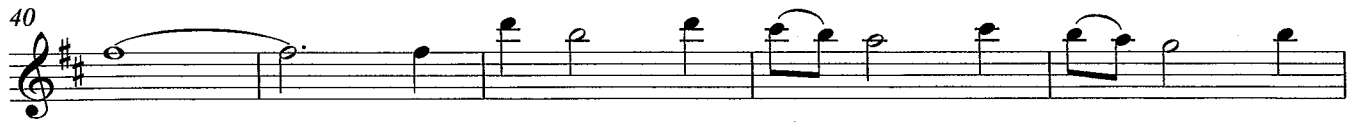
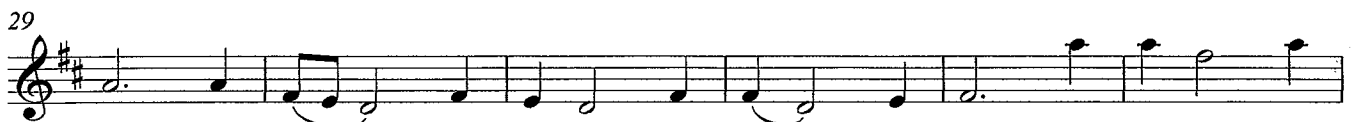
31

39

46

54

Sats 17 tacet



Violin I

Musical staff for Violin I, measures 1-5. Measure 1-4 are whole rests. Measure 5 starts with a forte (*f*) dynamic, a violin (*v*) marking, and a slur over a sixteenth-note run. A piano (*p*) marking is above the final note of the slur. A "Sp." (Sforzando) marking is above the final note of the staff.

Musical staff, measures 6-10. Measure 6 has a first ending bracket. Measure 7 has a 3/8 time signature. Measure 8 has a 6/8 time signature. Measure 9 has a 3/8 time signature. Measure 10 has a first ending bracket and a first ending (1.) marking.

Musical staff, measures 11-13. Measure 11 has a second ending bracket. Measure 12 has a 2/4 time signature and a fermata. Measure 13 has a violin (*v*) marking.

Musical staff, measures 14-19. Measure 14 has a 2/4 time signature. Measure 15 has a 3/4 time signature. Measure 16 has a 2/4 time signature. Measure 17 has a 3/4 time signature. Measure 18 has a 2/4 time signature. Measure 19 has a fermata. The text "Sats 20 attacca" is written to the right of the staff.

Violin I

6 1. 12 13

22 ♩ = 80

24

6 6 6 6

25

7 6 6 6

26

6 6 6 6

27

6 6 3

29

3

31

3 3 3 8va

35

(8) 8va

39

(8) 3

43

3 3 3

Sats 21, 22 tacet



