

Bengt-Göran Sköld:

Till Betlehem

Juloratorium

Viola

# Juloratorium

## Ouvertyr

Bengt-Göran Sköld

♩ = 70-80

Viola

5

9

16

♩ = 110  
Swing tempo

28

31

34

♩ = 74

40

46

♩ = 120

50

55

59

5

9

16

28

31

34

40

46

50

55

59

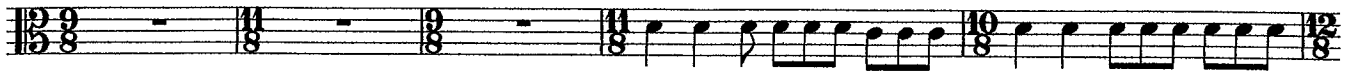
63

♩ = 102

4

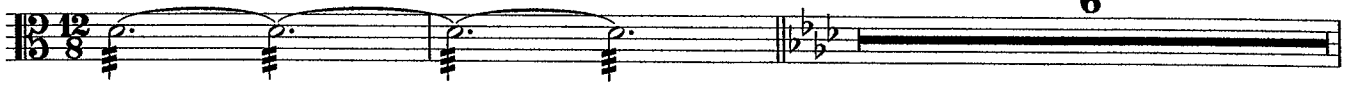


70



75

6



83

rit. . . .

3



89 ♩ = 64

cresc.

*p*

*mf*

*f*



96

*ff*

3

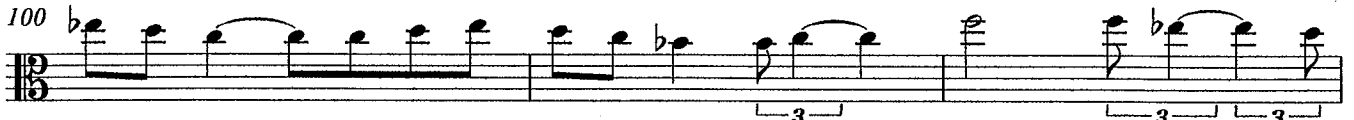


100

3

3

3



103

Attacca



### Sats 2 Tacet

3

$\text{♩} = 67$

Viola

7

14

35

50

Sats 4 tacet

Viola 



11 

14 

19 *Attacca* 

41 

61 

66 

71 

75 

125



135



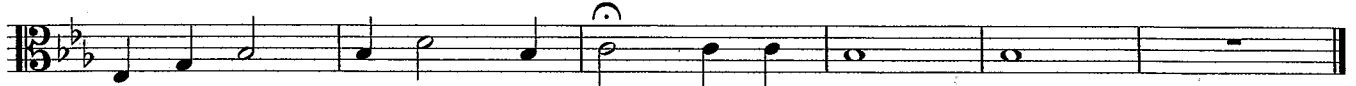
143



191



196



**Sats 6 tacet**

Viola *mp*

37

44

52 *mf*

57

**Sats 8 tacet**

Viola

1 2 3 4 5

6

6 7 8 9 10

11

11 12 13 14 15

16

16 17 18 19 20

27

27 28 29 30

30

31 32 33

34

*ff*

34 35 36 37 38

39

39 40 41 42

43

43 44 45

46

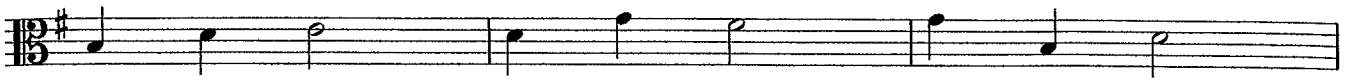
46 47 48

49

49 50 51



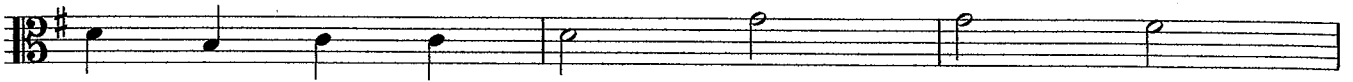
52



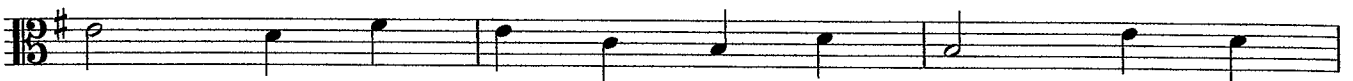
55



58



61



64



69



73



76



79



81



82

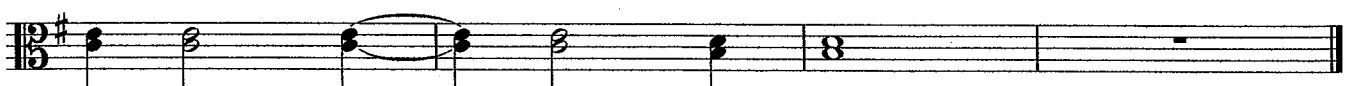


85

88



90



Lento, dolce

Viola

32

37

40

Sats 11 tacet

Del II

Allegro

Viola

*f*

4

7

10

13

16



19



22



24



26



29



26

2

*omtages ev. några ggr.*

59



Viola 

26 


64 

71 

78 

91 

98 

104 

**Sats 14 o 15 tacet**

Viola **19**

25

31

37

43

49

55

58

**Sats 17 tacet**



7



13



19



24



30



36



41



45



Viola

Measures 1-5 of the Viola part. Measures 1-2 are whole rests. Measure 3 begins with a repeat sign. Measure 4 features a forte (*f*) dynamic marking and a slur over a sixteenth-note ascending scale. Measure 5 is a whole note chord.

6

Measures 6-10 of the Viola part. Measures 6-9 are whole note chords. Measure 10 is a whole note chord with a first ending bracket and a first ending repeat sign.

11

Measures 11-15 of the Viola part. Measure 11 is a whole note chord. Measure 12 is a whole note chord. Measure 13 begins with a 2/4 time signature change and a slur over a sixteenth-note ascending scale. Measure 14 is a whole note chord. Measure 15 is a whole note chord.

14

Measures 16-20 of the Viola part. Measures 16-19 are whole note chords. Measure 20 is a whole note chord with a fermata and the instruction "Sats 20 attacca".

Viola 

21 

22  $\text{♩} = 80$  

23 

24 

25 

26 

28 

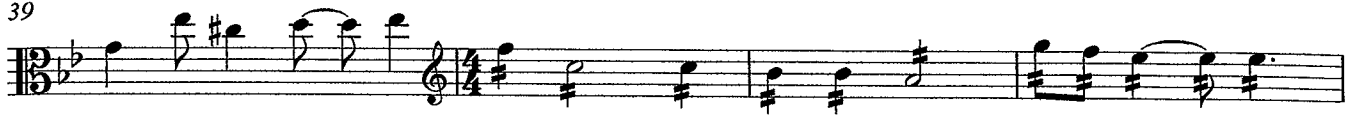
31 



35



39



43



**Sats 21 o 22 tacet**

